

Sno-NET® Activation Instructions



Thank You

Thank you for purchasing **Sno-NET®** ready equipment which allows you to ***“Be there without going there”***.

Your equipment has been fully tested for functionality prior to shipment. You need to establish a Sno-NET® user account in order to access the site.

If you don't already have an account, please contact your supervisor or contact Railway Equipment Company support at sales@rwy.com or 1-800-624-5794 for assistance.



Getting Started

When you're ready to activate your asset, please log into the applicable **Sno-NET®** portal and have the asset serial number and cell modem ESN(hex) number available.

Examples:

<http://bnsf.sno-net.com/>

<http://cn.sno-net.com/>

<http://cp.sno-net.com/>

<http://csx.sno-net.com/>

<http://ns.sno-net.com/>

<http://up.sno-net.com/>



Login In Screen

Please enter your **Sno-NET®** account username and password. If you don't have an account, please contact your supervisor or call Railway Equipment Company support at 1-800-624-5794 for assistance.



RAILWAY EQUIPMENT Co.

Log In

Username

Password

Remember me on this computer.

[Request New User Login](#)

If you require assistance please contact RRAMAC:

- support@rramac.com
- 763-972-2200

Copyright © 2005- 2013 RRAMAC, LLC. All rights reserved



Asset Locator Page

Once logged in, you'll be directed to the Asset Locator Page.

Sno-NET® for **RAILWAY EQUIPMENT Co.** by **RRAMAC** Asset Locator Notifications Settings Administration Activate Asset Sign Out

Change Portal ▼

Asset Locator This page will automatically refresh in 4 minutes 14 seconds.

Region	Division	Subdivision	Mile Post	Asset Name	Asset Type	Temperature	CFB	Status	Weather	Fuel
All	All	All			All					
<input type="checkbox"/>				AjaxTest	Snow Melter			Unknown State		
<input type="checkbox"/>				AprilFoolsDay1	Snow Melter			Unknown State		
<input type="checkbox"/>				Asset 3486	Snow Melter			Unknown State		
<input type="checkbox"/>				AssetActivate	Snow Melter			Unknown State		
<input type="checkbox"/>				AssetLink	Snow Melter			Unknown State		
<input type="checkbox"/>				Bird	Snow Melter			Unknown State		
<input type="checkbox"/>				Bug8985_Testing1	Switch Monitor			Unknown State		
<input type="checkbox"/>				Bunkie	EHAB			Unknown State		
<input type="checkbox"/>				Camera-CAM_1236*1	Camera			Unknown State		
<input type="checkbox"/>				Camera-CAM_1237*1	Camera			Unknown State		
<input type="checkbox"/>				Camera-CAM_1500*1	Camera			Unknown State		
<input type="checkbox"/>				Camera-CAM_2921*1	Camera			Unknown State		
<input type="checkbox"/>				Camera-CAM_6876899*1	Camera			Unknown State		
<input type="checkbox"/>	South			CheeseDanishBypassTest-01	Snow Melter			Unknown State		
<input type="checkbox"/>				chik-001	Snow Melter			Unknown State		
<input type="checkbox"/>				Daisy1	Snow Melter			Unknown State		
<input type="checkbox"/>				Daisy2	EHAB			Unknown State		
<input type="checkbox"/>	Southwest	Powder River	Office	48.0	Derbel			Unknown State		
<input type="checkbox"/>					From-Scratch-Asset			Unknown State		
<input type="checkbox"/>				114.0	Gen-01			Unknown State		

Page size: 20 144 items in 8 pages

Page size: 20 144 assets in 8 pages

Control Assets



Step 1: Select Asset Type

Please select the asset type (i.e. Snow Melter) and then click the "Next" button.

Activate Asset

Welcome to the Asset Activation Tool.

Step 1.
Select the type of asset you wish to activate.

Asset:



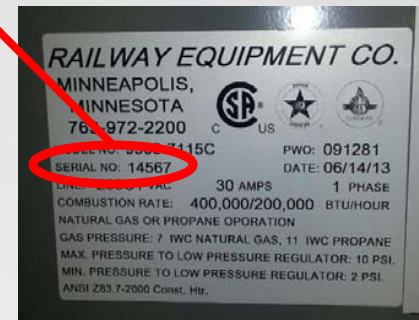
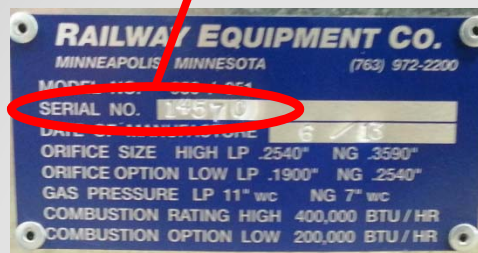
Step 2: Enter Serial Number and Customer

Please enter the asset Serial Number (see examples below) and then click the "Next" button.

Activate Asset

Step 2.

Enter Serial Number:



Step 3: Enter Required Information


Please fill in as much information as possible and click the "Next" button. The Asset Name and cell modem ESN (hex) are required.

Activate Asset

Step 3.
Enter Required Information:

Asset Name:*	<input type="text" value="Test-Activate"/>	
Asset Serial Number:	<input type="text" value="UNK_2259"/>	
Short Name:	<input type="text" value="Office GHAB"/>	Used for text messaging
Geo Location:	Latitude: <input type="text" value="44° 58'"/> Longitude: <input type="text" value="93° 16'"/>	
Region:	<input type="text" value="USA"/>	
Division:	<input type="text" value="MINNESOTA"/>	
Subdivision:	<input type="text" value="Office"/>	
Zip Code:	<input type="text" value="55403"/>	
Mile Post:	<input type="text" value="1"/>	
ESN:*	<input type="text" value="60E96367"/>	

Note: Only the required (*) information is necessary to activate the asset. However it is highly recommended that you complete all the fields where information is available.



Step 4: Assign Users

Please select the users you want to have access to the asset and then click the "Next" button.

Activate Asset

Step 4.

Assign the users you wish to have access.

Asset: Test-Activate
Cannot View

User 4

User 5

User 6

Can View

User 1

User 2

User 3

▶

◀

▶▶

◀◀

Prev Next



Activation Complete

Your asset has been successfully activated. If you're done activating assets, please click the "Finish" button and you'll be redirected to the Asset Locator Page.

Activate Asset

Asset: Test-Activate has been successfully activated.

[Click here to activate another asset.](#)

Finish



Customer Support

Congratulations! Your equipment has been activated.

Please contact Railway Equipment Company customer support at sales@rwy.com or 1-800-624-5794 if you experience any technical difficulties or have any questions.

Thank you,

Railway Equipment Company

